

A leaf falls in loneliness

for

mezzosoprano
clarinet in B \flat
cello
tape

Ørjan Matre 2006, revised 2010

EXPLANATIONS



Inhale



Exhale



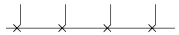
Small alterations of pitch (smaller than a quarter-tone). This notation appears from bar 122. Mezzosoprano and cello should adjust their intonation according to the resulting multiphonic clarinet pitches (which may differ from the notated pitches).



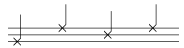
Japanese pronunciation



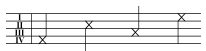
English pronunciation



Mezzosoprano : voiceless (whispering)



Clarinet : breathing sound only. Produced by blowing through the mouthpiece of the clarinet. Use fingering to produce three "pitches": high, middle and low register.



Cello: Soft sound without pitch. Place two or more fingers like harmonics on the notated string (roman numerals) in order not to produce any pitch.



Dynamic markings with quotation marks indicate the intensity of the performance action and not the resulting absolute volume of the action.

The three musicians should be amplified to match the tapesounds.

The score is transposed

Durata: ca. 10:30

A leaf falls in loneliness

Ørjan Matre 2006, revised 2010

♩ = 104

Mezzo.

B \flat Cl.

Vc.

Tape

↓ Track 1

6

Mezzo.

B \flat Cl.

Vc.

Tape

(A leaf falls in loneliness)

11 $\text{♩} = 52$ ($\text{♩} = \text{♩}$)

13 $\text{♩} = 104$ ($\text{♩} = \text{♩}$)

Mezzo. (wo)

B♭ Cl. *mp* *mp* *sim.* *pp* *mp*

Vc. *mf* *pp* *mf*

col legno ord. col legno

↓ Track 2

Tape

16

Mezzo.

B♭ Cl. *pp* *mp* *mp* *mp* *pp* *mp*

Vc. *pp* *mf* *pp* *mf* *pp* *mf*

ord. col legno ord. col legno ord. col legno

Tape

(A leaf falls in loneliness)

21

Mezzo.

B♭ Cl.

Vc.

Tape

Mezzo-soprano: *mf* jap. wo

B♭ Clarinet: *mp*, *mp*, *mp*, *mp*, *mp*, *pp*, *mp*, *mp*

Violoncello: *pp*, *mf*, *pp*, *mf*, *pp*, *mf*

Annotations: *ord.*, *gl.*, *tr.*, *gl.*

26

Mezzo.

B♭ Cl.

Vc.

Tape

29

↓ Track 3

Mezzo-soprano: *mf* wo ta

B♭ Clarinet: *mp*, *mp*, *pp*, *mp*

Violoncello: *mp*, *pp*, *mp*, *pp*

Annotations: *gl.*, *sim.*, *sul tasto*, *gl.*

* As if gasping for breath

(A leaf falls in loneliness)

42

Mezzo. *mf* *mf* *pp*

B♭ Cl. *mp* *pp* *mp* *mf*

Vc. *mf* *pp* *mf*

Tape

44 $\text{♩} = 52$ *

jap. wo wo ha

ord. tr. col legno ord.

gl. gl.

↓ Track 4

47

Mezzo. *mp* *mp*

B♭ Cl. *pp* *mp* *mp* *pp*

Vc. *mf* *pp* *mp* *pp*

Tape

jap. sa bi shi sa

ord. jeté V sul tasto

gl. gl.

* As if gasping for breath

(A leaf falls in loneliness)

53

Mezzo. *mp* *mp* *p* 58 $\text{♩} = 60$

hi to wo ha te

B♭ Cl. *p* *mf* *mp*

Vc. *mp* *pp* *mf* *mp*

↓ Track 5

59

Mezzo. *pp*

hi

B♭ Cl. *pp* *p* *pp* *mp* *mp* *pp*

Vc. *mp* *mp* *mp*

↓ Track 6

↓ Track 7

(A leaf falls in loneliness)

65

Mezzo. *mp* *mp*

eng. I (a → i)

a - m

B♭ Cl. *p* *mf*

Vc. *mp* *pp* *mf*

↓ Track 8

Tape

Detailed description: This musical score block covers measures 65 to 70. The Mezzo-soprano part begins with a dynamic of *mp* and features a vocal line with lyrics 'eng. I (a → i)' and 'a - m'. The B♭ Clarinet part starts with a piano (*p*) dynamic and later moves to *mf*. The Violoncello part begins with *mp* and *pp* dynamics. The score includes various musical notations such as slurs, accents, and dynamic markings. A 'Track 8' label with a downward arrow is positioned below the Violoncello staff.

71 ♩ = 72

Mezzo. *p* *p* *mp* *mf*

[jap.] shi sa wo to

B♭ Cl. *mp* *mf*

Vc. *mf* *mp* *mf*

Tape

Detailed description: This musical score block covers measures 71 to 76. The Mezzo-soprano part begins with a piano (*p*) dynamic and features a vocal line with lyrics '[jap.] shi sa wo to'. The B♭ Clarinet part starts with a mezzo-piano (*mp*) dynamic and later moves to *mf*. The Violoncello part begins with a mezzo-forte (*mf*) dynamic and later moves to *mp*. The score includes various musical notations such as slurs, accents, and dynamic markings.

* As if gasping for breath

(A leaf falls in loneliness)

78

Mezzo. *mp* te hi to ki gliss. *pp*

B♭ Cl. *mp* *mf* *mp* *mp* *mp* gl. 5 3"

Vc. *mp* sul tasto 4:3 *mf* sul tasto 3:2 3" *mp* sul tasto 4:3 *pp* gliss.

Track 9 ↓

83

Mezzo. *mp* gliss. ri a

B♭ Cl. *pp* *p*

Vc. *mp* s.t. s.p. *mf*

Track 10 ↓

(A leaf falls in loneliness)

89

Mezzo. *p* ka ki

B♭ Cl. *mp* *mf* *mp* *mf*

Vc. *mp* *mp* *mf* *mp* *mf*

Tape

94

Mezzo. *p* *pp* *mp* *pp* ri hi to

B♭ Cl. *mp* *pp* *p*

Vc. *mp* *pp* *mp* *pp* *ppp*

Tape

* As if gasping for breath

(A leaf falls in loneliness)

100

Mezzo. sa bi eng. one jap. shi sa

B♭ Cl. *pp* *p* *pp* *pp* *p* *pp* *p* *pp*

Vc. *pp* *ppp* *mp* *pp* *ppp* *pp* *ppp*

Tape ↓ Track 11

(adjust intonation to clarinet multiphonics)

106

Mezzo. ha ha ha

B♭ Cl. *p* *pp* *mp* *mp* *pp* *mp* *pp*

Vc. *pp* *mp* *pp* *mp* *pp*

Tape

(A leaf falls in loneliness)

123

Mezzo. *p* (adjust intonation to clarinet multiphonics)

B♭ Cl. *pp* *pp* *mp* *pp* *pp*

Vc. *ppp* *pp* *ppp* *ppp* *ppp* *pp* *ppp* *ppp*

Tape

eng. f (falls)

3rd 126

130

Mezzo. *p* *p*

B♭ Cl. *pp* *pp*

Vc. *pp* *ppp* *pp* *ppp* *ppp*

Tape

jap. s a

5th 131

148 153

Mezzo. *p* *p* 20'' 20'' 20''

B♭ Cl. *pp* *pp* 20'' 20''

Vc. *pp* *ppp* *ppp* *pp* *ppp* *ppp* 20'' 20''

Tape

154

Mezzo. *p* *p* *p* 20'' 20'' 20''

B♭ Cl. *pp* *pp* *pp* 20'' 20'' 20''

Vc. *pp* *ppp* *ppp* *pp* *pp* 20'' 20''

Tape

↓ Track 12

160

Mezzo.

B♭ Cl.

Vc.

Tape

(♩ = 72)

Mezzo.

B♭ Cl.

Vc.

Tape

sa bi

jap.

shi sa

(A leaf falls in loneliness)

(♩ = 72)

Mezzo.

mp *pp*

a — ma

B♭ Cl.

"mf" *pp*

Vc.

"mf" *pp*

Tape